

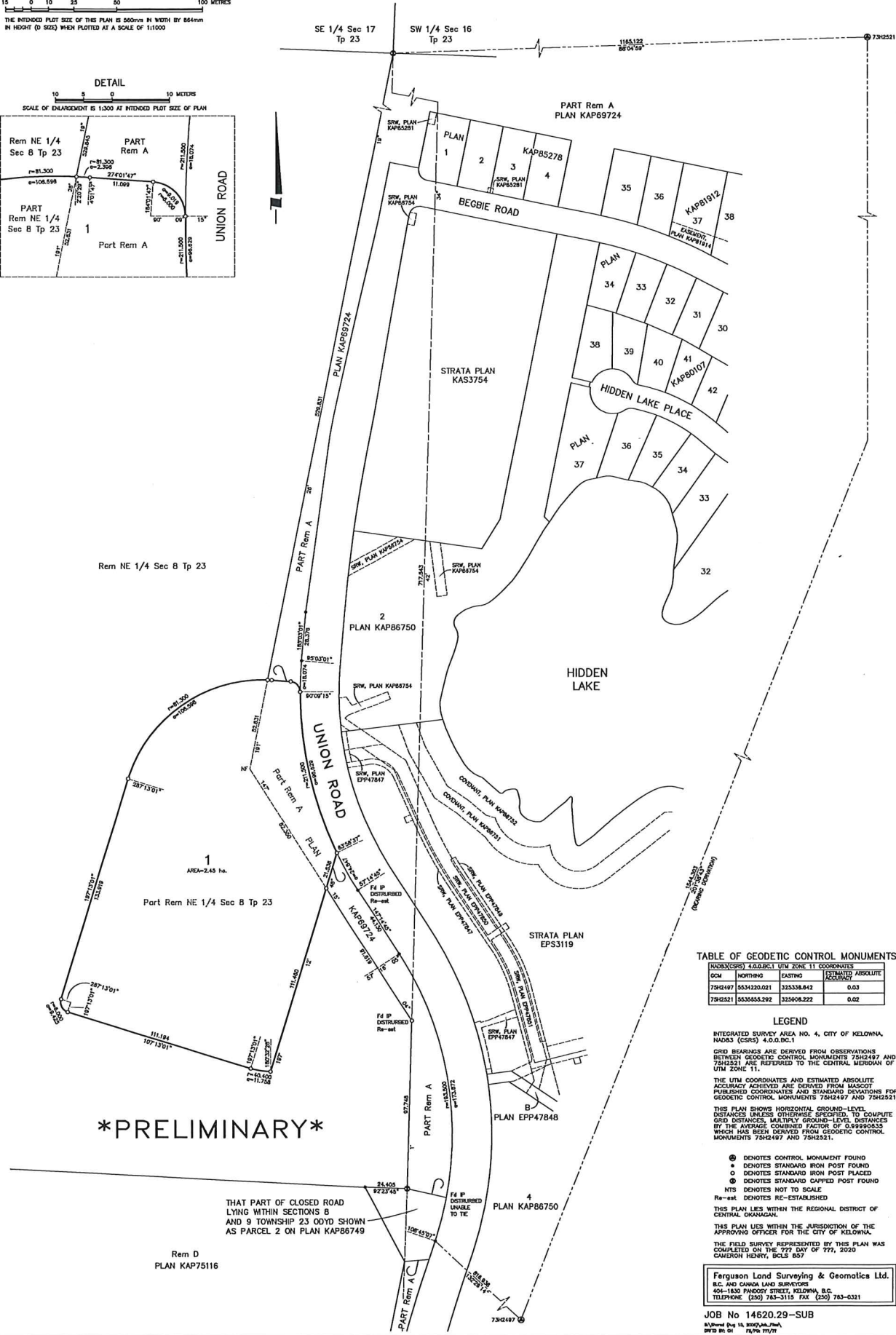
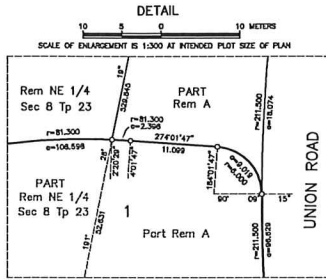
SUBDIVISION PLAN OF PART OF THE NORTH EAST 1/4 OF SECTION 8  
 TOWNSHIP 23 ODYD EXCEPT PLAN KAP69724 AND PART OF LOT A  
 SECTIONS 4, 5, 8 AND 9 TOWNSHIP 23 ODYD PLAN KAP69724 EXCEPT  
 PLANS KAP71944, KAP73768, KAP75949, KAP78547, KAP80107,  
 KAP81912, KAP85278, KAP86750, EPP24895 AND EPP93548

PLAN EPP101624

**\*PRELIMINARY\***

BCGS 82E.093

15 0 10 25 50 100 METRES  
 THE INTENDED PLOT SIZE OF THIS PLAN IS 550mm IN WIDTH BY 854mm  
 IN HEIGHT (D 502) WHEN PLOTTED AT A SCALE OF 1:1000



**\*PRELIMINARY\***

THAT PART OF CLOSED ROAD  
 LYING WITHIN SECTIONS 8  
 AND 9 TOWNSHIP 23 ODYD SHOWN  
 AS PARCEL 2 ON PLAN KAP86749

TABLE OF GEODETIC CONTROL MONUMENTS

NAD83(CSRS) 4.0/BC1 UTM ZONE 11 COORDINATES	EASTING		NORTHING	
CCM	NORTHING	EASTING	ESTIMATED ABSOLUTE ACCURACY	REMARKS
75H2487	5531220.021	325338.842	0.03	
75H2521	5535655.292	325908.222	0.02	

LEGEND

INTEGRATED SURVEY AREA NO. 4, CITY OF KELLOWNA, WA03 (CSRS) 4.0/BC1.1  
 GRID BEARINGS ARE DERIVED FROM OBSERVATIONS BETWEEN GEODETIC CONTROL MONUMENTS 75H2487 AND 75H2521 ARE REFERRED TO THE CENTRAL MERIDIAN OF UTM ZONE 11.  
 THE UTM COORDINATES AND ESTIMATED ABSOLUTE ACCURACY ACHIEVED ARE DERIVED FROM BACSOFT PUBLISHED COORDINATES AND STANDARD DEVIATIONS FOR GEODETIC CONTROL MONUMENTS 75H2487 AND 75H2521.  
 THIS PLAN SHOWS HORIZONTAL GROUND-LEVEL DISTANCES UNLESS OTHERWISE SPECIFIED, TO COMPUTE GRID DISTANCES, MULTIPLY GROUND-LEVEL DISTANCES BY THE AVERAGE CORRECTION FACTOR OF 0.99990335 WHICH HAS BEEN DERIVED FROM GEODETIC CONTROL MONUMENTS 75H2487 AND 75H2521.  
 ● DENOTES CONTROL MONUMENT FOUND  
 \* DENOTES STANDARD IRON POST FOUND  
 ○ DENOTES STANDARD IRON POST PLACED  
 ⊙ DENOTES STANDARD CURVED POST FOUND  
 HTS DENOTES NOT TO SCALE  
 Re-est DENOTES RE-ESTABLISHED  
 THIS PLAN LIES WITHIN THE REGIONAL DISTRICT OF CENTRAL OKANAGAN.  
 THIS PLAN LIES WITHIN THE JURISDICTION OF THE APPROVING OFFICER FOR THE CITY OF KELLOWNA.  
 THE FIELD SURVEY REPRESENTED BY THIS PLAN WAS COMPLETED ON THE 7TH DAY OF 7TH, 2020  
 CAMERON HENRY, BCLS 657

Ferguson Land Surveying & Geomatics Ltd.  
 B.C. AND CANADA LAND SURVEYORS  
 404-1830 PANDOCY STREET, KELLOWNA, B.C.  
 TELEPHONE: (250) 783-3115 FAX: (250) 783-0321

JOB No 14620.29-SUB  
 Revised: Aug 13, 2020/Jan 7, 2021  
 8/13/20 8/13/21